



## MEAT, POULTRY, GAME & COLD CUTS

### PLEASE NOTE THE FOLLOWING BEFORE ORDERING

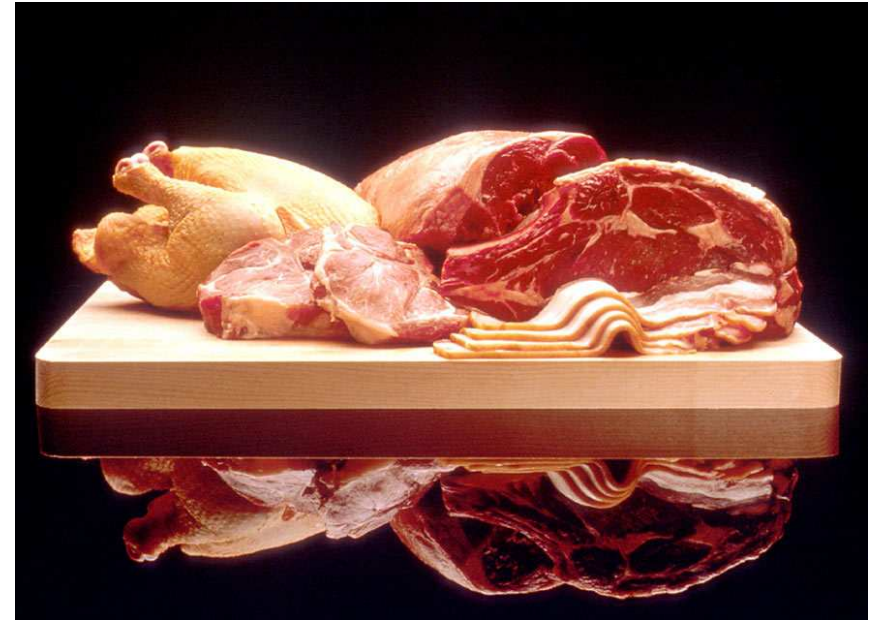
WE ONLY OFFER THE HIGHEST QUALITY FRESH MEAT.

MEAT ORDERS CAN BE MADE PER KG OR PER PIECE AND THEY ALWAYS COME IN VACUUM PACKS.

THE QUANTITY GIVEN IN OUR FORM IS JUST IN ORDER TO HAVE AN IDEA OF THE WHOLE SIZE OR OF THE MOST COMMON PACKAGINGS.

PLEASE ALWAYS SPECIFY THE QUANTITY YOU NEED.

PLEASE INFORM US ABOUT DIFFERENT REQUIREMENTS WE WILL TRY TO MEET YOUR NEEDS.





## MEAT, POULTRY, GAME & COLD CUTS

DESCRIPTION	QTY
beef	
Beef escalope (60gr)	
Beef entrecote (200gr)	
Beef eye round whole (3kg)	
Beef fillet whole (3,5kg)	
Beef loin with bone (18kg)	
Beef minced	
Beef ossobuco (300gr)	
Beef roast whole (3kg)	
Beef sirloin whole (5kg)	
Beef sausages (120gr)	
Beef stewing whole (3kg)	
Beef shoulder whole boneless (8kg)	
Beef silverside with eye round (8kg)	
Beef steak (150gr)	
Beef top chuck whole (1,5kg)	
Beef under shoulder whole (8kg)	
Chicken	
Chicken breast slices (100gr)	
Chicken breast double (600gr)	
Chicken leg drumstick (200gr)	
Chicken thigh (100gr)	
Chicken poussin (600gr)	
Chicken whole (1,2kg)	
Chicken wings (50gr)	
Cornish hen (2kg)	
Duck & Goose & Guinea Fowl	
Duck breast fresh (400/800gr)	

DESCRIPTION	QTY
Duck breast smoked (600gr)	
Duck legs (100gr)	
Foie gras – duck or goose (600gr)	
Pate de foie gras (80gr)	
Goose breast smoked (800gr)	
Guinea fowl (1,6kg)	
Guinea fowl breast (400gr)	
Lamb	
Lamb leg (2,5kg)	
Lamb loin backstrips (800gr)	
Lamb minced	
Lamb cutlet (60gr)	
Lamb shank (400gr)	
Rack of lamb (800gr)	
Lamb stewing	
Lamb shoulder (2kg)	
Lamb boneless (4,5kg)	
Pork	
Pork loin with or with/o bone (1 pc 180gr)	
Pork belly – boneless (2kg)	
Pork fillet (600gr)	
Pork leg (10kg)	
Pork minced	
Pork spare rib (1 rack 2kg)	
Pork sausages (Italian style or thin)	
Quail (1 quail 180gr)	
Turkey	
Turkey breast sliced (120gr)	

DESCRIPTION	QTY
Turkey breast whole (4kg)	
Turkey drumstick/leg (2kg)	
Turkey minced	
Turkey whole (15kg)	
Veal	
Veal cutlets escalopes (60gr)	
Veal eye round (1,2kg)	
Veal fillet (1,5kg)	
Veal minced	
Veal ossobuco (200gr)	
Veal racks (200gr)	
Veal stewing	
Eggs – fresh eggs grade A	
Eggs – quail eggs	
Ham, salami, cold cuts	
Bacon sliced – 250gr pks	
Raw ham sliced – 250gr pks	
Parma ham sliced – 250 gr pcks	
Speck sliced – 250gr pks	
Salami (sliced or whole)	
Bresaola (sliced or whole)	
Turkey breast (sliced or whole)	
Coppa	
Culatello	
Mortadella	
Soppressa	
Chorizo	
Patanegra ham	

OSTRICH FILLET IS AVAILABLE UPON REQUEST